

National Partnership to Improve Dementia Care in Nursing Homes: Antipsychotic Medication Use Data Report

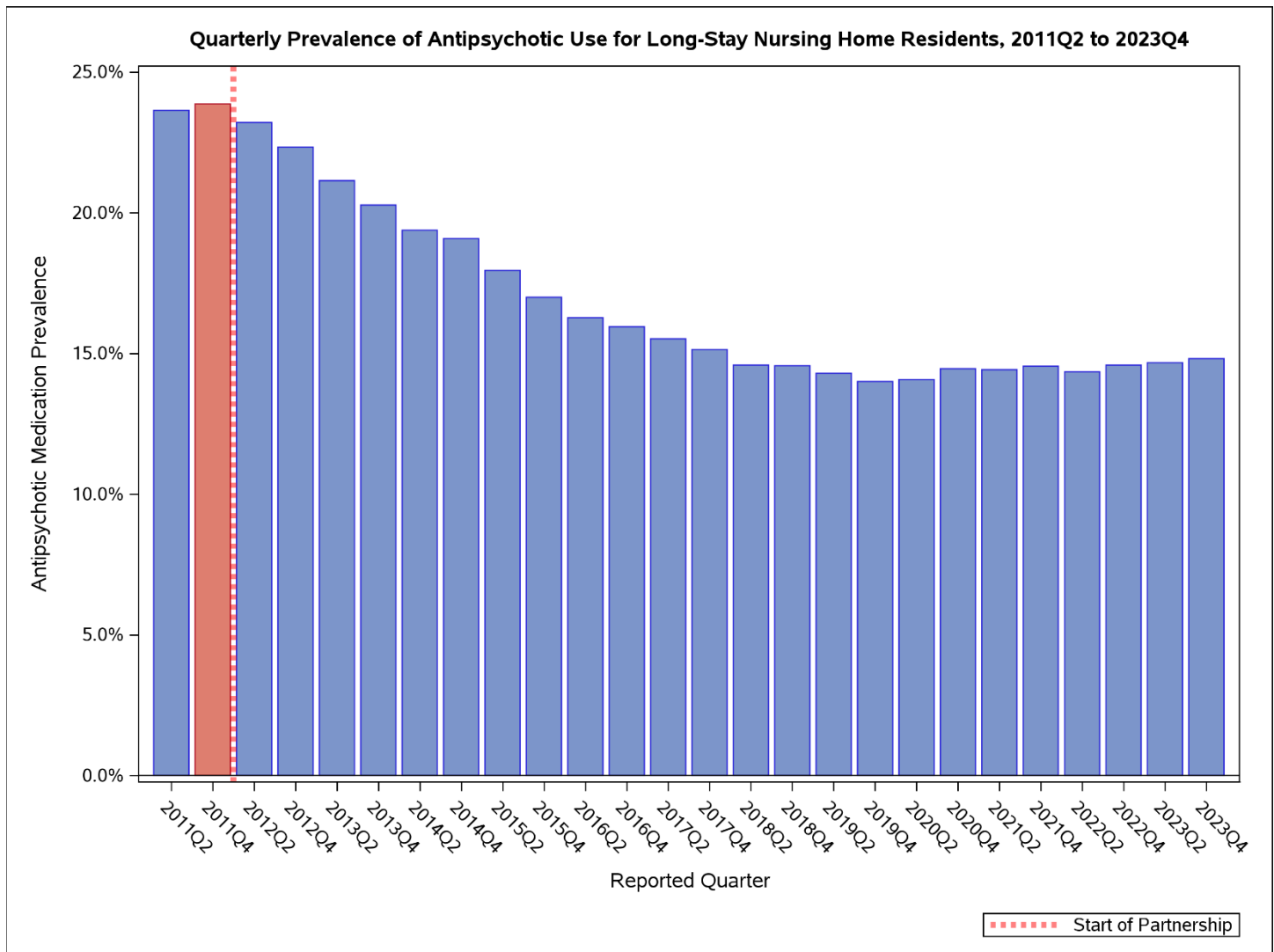
The Centers for Medicare & Medicaid Services (CMS), in collaboration with their partners, have worked to:

- Enhance the quality of life for people living with dementia;
- Protect them from substandard care;
- Promote goal-directed, person-centered care for every nursing home resident; and
- Increase the use of non-pharmacologic approaches and person-centered dementia care practices.

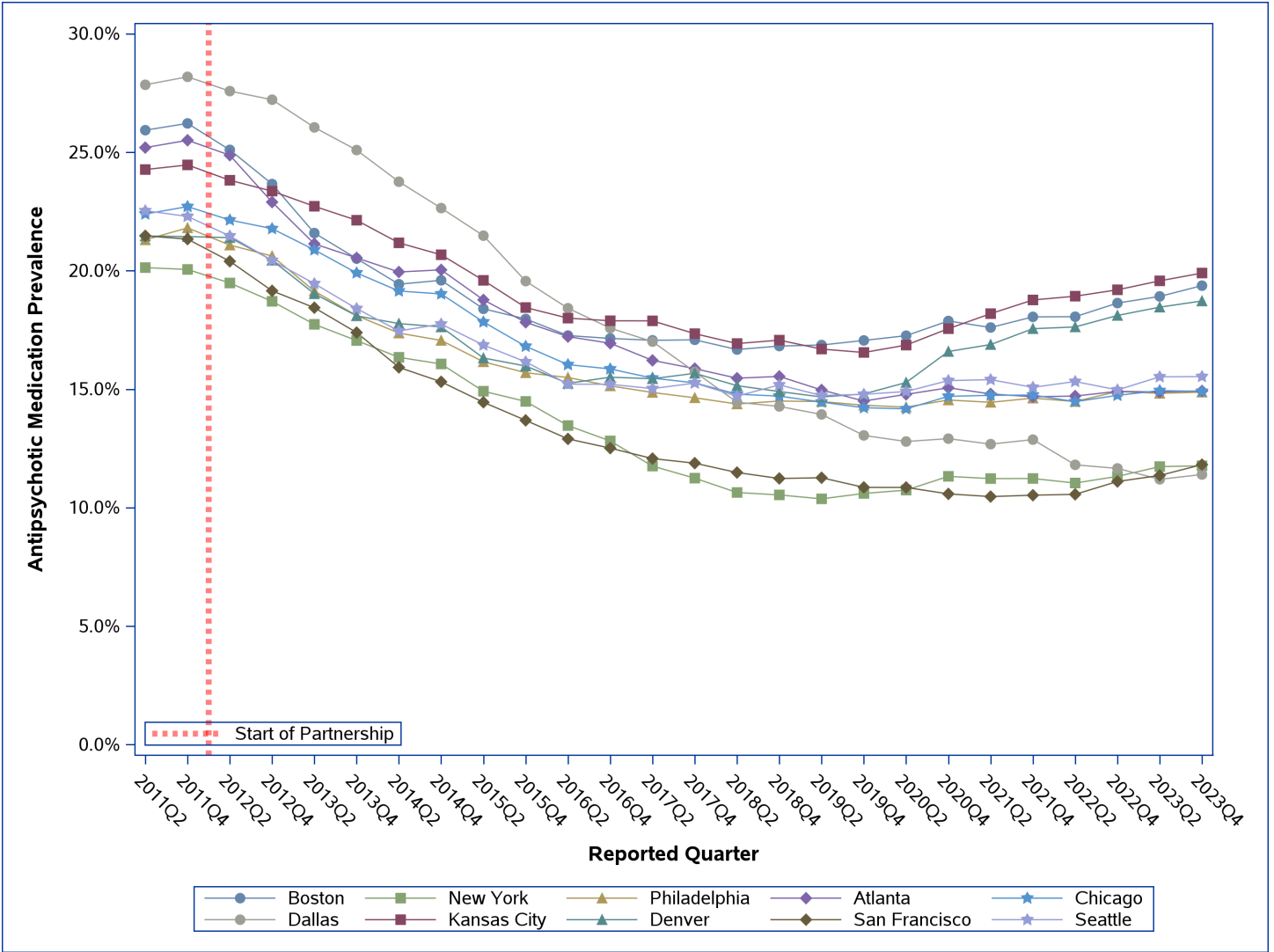
Through efforts like the [National Partnership to Improve Dementia Care in Nursing Homes](#), CMS has significantly reduced the use of antipsychotic medications in nursing homes, when not clinically indicated.

CMS tracks the use of antipsychotic medication in nursing homes by reviewing publicly reported measures. The measure used for this report is based upon the percentage of long-stay nursing home residents who are receiving an antipsychotic medication, excluding those residents diagnosed with schizophrenia, Huntington's Disease or Tourette's Syndrome. In 2011Q4, 23.9 percent of long-stay nursing home residents were receiving an antipsychotic medication, since then there has been a decrease of 37.9 percent to a national prevalence of 14.8 percent in 2023Q4. Success has varied by state and CMS location, with some states and locations having seen a reduction of greater than 50 percent. CMS acknowledges that circumstances exist where clinical indications for the use of antipsychotic medications are present and does not expect that the national prevalence of antipsychotic medication use will decrease to zero.

For questions, please send correspondence to CMSQINQIProgram@cms.hhs.gov.



Quarterly Prevalence of Antipsychotic Use for Long-Stay Residents, CMS Locations



location	2011Q4	2013Q4	2014Q2	2014Q4	2015Q2	2015Q4	2016Q2	2016Q4	2017Q2	2017Q4	2018Q2	2018Q4	2019Q2	2019Q4	2020Q2	2020Q4	2021Q2	2021Q4	2022Q2	2022Q4	2023Q2	2023Q4	Percentage point difference (2023Q4-2011Q4)	% Change
National	23.9%	20.3%	19.4%	19.1%	18.0%	17.0%	16.3%	16.0%	15.5%	15.1%	14.6%	14.6%	14.3%	14.0%	14.1%	14.5%	14.4%	14.5%	14.3%	14.6%	14.7%	14.8%	-9.05	-37.9%
Boston	26.2%	20.5%	19.4%	19.6%	18.4%	18.0%	17.3%	17.1%	17.1%	17.1%	16.7%	16.8%	16.9%	17.1%	17.3%	17.9%	17.6%	18.1%	18.1%	18.6%	18.9%	19.4%	-6.85	-26.1%
New York	20.1%	17.1%	16.3%	16.1%	14.9%	14.5%	13.5%	12.8%	11.8%	11.2%	10.6%	10.5%	10.4%	10.6%	10.7%	11.3%	11.2%	11.2%	11.0%	11.3%	11.7%	11.8%	-8.29	-41.3%
Philadelphia	21.8%	18.1%	17.4%	17.1%	16.2%	15.7%	15.5%	15.1%	14.9%	14.6%	14.4%	14.5%	14.5%	14.3%	14.2%	14.5%	14.4%	14.6%	14.5%	14.9%	14.8%	14.9%	-6.93	-31.8%
Atlanta	25.5%	20.5%	20.0%	20.0%	18.8%	17.8%	17.2%	16.9%	16.2%	15.9%	15.5%	15.5%	15.0%	14.5%	14.8%	15.1%	14.8%	14.7%	14.7%	14.9%	14.9%	14.9%	-10.58	-41.5%
Chicago	22.7%	19.9%	19.1%	19.0%	17.8%	16.8%	16.0%	15.9%	15.5%	15.3%	14.8%	14.7%	14.5%	14.2%	14.2%	14.7%	14.7%	14.8%	14.5%	14.7%	14.9%	14.9%	-7.80	-34.3%
Dallas	28.2%	25.1%	23.8%	22.6%	21.5%	19.6%	18.4%	17.6%	17.0%	15.7%	14.4%	14.3%	13.9%	13.1%	12.8%	12.9%	12.7%	12.9%	11.8%	11.7%	11.2%	11.4%	-16.79	-59.6%
Kansas City	24.5%	22.1%	21.2%	20.7%	19.6%	18.4%	18.0%	17.9%	17.9%	17.3%	16.9%	17.1%	16.7%	16.6%	16.9%	17.6%	18.2%	18.8%	18.9%	19.2%	19.6%	19.9%	-4.56	-18.7%
Denver	21.4%	18.1%	17.8%	17.6%	16.3%	16.0%	15.2%	15.5%	15.4%	15.7%	15.2%	14.9%	14.7%	14.8%	15.3%	16.6%	16.9%	17.6%	17.6%	18.1%	18.5%	18.7%	-2.72	-12.7%
San Francisco	21.3%	17.4%	15.9%	15.3%	14.5%	13.7%	12.9%	12.5%	12.1%	11.9%	11.5%	11.2%	11.3%	10.9%	10.9%	10.6%	10.5%	10.5%	10.6%	11.1%	11.4%	11.8%	-9.52	-44.6%
Seattle	22.3%	18.4%	17.5%	17.8%	16.9%	16.2%	15.2%	15.2%	15.0%	15.3%	14.7%	15.2%	14.7%	14.8%	14.9%	15.4%	15.4%	15.1%	15.3%	15.0%	15.5%	15.5%	-6.76	-30.3%

Source: CMS Quality Measure, based on MDS 3.0 data. For more information, see the MDS 3.0 Quality Measures Users Manual.

Quarterly Prevalence of Antipsychotic Use for Long-Stay Residents, States

State	2011Q4	2013Q4	2014Q2	2014Q4	2015Q2	2015Q4	2016Q2	2016Q4	2017Q2	2017Q4	2018Q2	2018Q4	2019Q2	2019Q4	2020Q2	2020Q4	2021Q2	2021Q4	2022Q2	2022Q4	2023Q2	2023Q4	Rank in 2023Q4 (lower=better)	Percentage point difference (2023Q4-2011Q4)	% Change
ALABAMA	27.3%	22.2%	22.4%	21.9%	20.6%	19.6%	18.6%	18.9%	18.7%	19.4%	19.8%	20.6%	19.3%	18.4%	19.0%	19.2%	19.7%	19.7%	20.2%	20.2%	20.3%	21.2%	47	-6.15	-22.5%
ALASKA	13.7%	12.8%	14.8%	16.4%	14.9%	15.0%	11.3%	10.0%	10.8%	12.8%	11.3%	13.1%	10.6%	10.4%	11.3%	15.3%	16.9%	15.2%	16.4%	16.5%	14.8%	17.6%	33	3.85	28.0%
ARIZONA	22.7%	20.7%	17.5%	17.7%	17.6%	17.0%	15.7%	14.0%	13.8%	13.5%	12.4%	11.8%	12.5%	11.5%	11.2%	10.8%	10.7%	10.6%	9.4%	10.0%	9.4%	10.7%	6	-12.01	-52.8%
ARKANSAS	26.1%	22.8%	19.9%	17.9%	17.0%	16.9%	15.9%	15.5%	15.2%	14.5%	14.1%	14.1%	13.3%	11.3%	11.3%	11.7%	12.0%	12.6%	11.6%	11.7%	11.1%	11.3%	8	-14.78	-56.6%
CALIFORNIA	21.6%	17.1%	15.8%	15.2%	14.2%	13.5%	12.7%	12.4%	11.9%	11.7%	11.5%	11.1%	11.1%	10.8%	10.8%	10.5%	10.4%	10.5%	10.6%	11.2%	11.5%	12.0%	10	-9.54	-44.3%
COLORADO	19.9%	16.4%	16.1%	15.9%	15.3%	14.9%	14.2%	14.5%	14.3%	14.7%	14.5%	14.7%	14.4%	14.9%	14.9%	16.4%	16.5%	17.6%	17.0%	17.7%	17.4%	17.4%	31	-2.45	-12.3%
CONNECTICUT	26.0%	21.0%	20.3%	20.5%	18.6%	16.9%	16.1%	16.3%	16.0%	15.9%	16.0%	16.5%	16.8%	16.3%	16.0%	16.7%	15.4%	15.6%	15.3%	15.8%	16.8%	17.2%	30	-8.81	-33.8%
DELAWARE	21.3%	15.5%	14.7%	14.8%	14.2%	12.6%	14.1%	12.9%	13.1%	14.6%	13.6%	13.5%	12.8%	12.0%	11.9%	11.8%	11.0%	11.5%	11.3%	11.0%	8.5%	9.3%	3	-11.97	-56.2%
DISTRICT OF COLUMBIA	20.0%	14.5%	15.0%	14.1%	12.8%	12.9%	11.9%	10.9%	13.8%	10.6%	9.7%	9.2%	12.3%	9.7%	9.5%	9.6%	7.1%	7.3%	7.2%	7.0%	8.4%	6.6%	1	-13.33	-66.7%
FLORIDA	24.5%	21.2%	20.6%	20.8%	18.9%	16.9%	16.0%	15.9%	14.9%	14.5%	13.9%	13.9%	13.2%	12.2%	12.2%	12.0%	11.3%	10.7%	10.1%	10.1%	9.7%	9.4%	4	-15.05	-61.5%
GEORGIA	28.7%	21.1%	20.3%	20.2%	19.9%	19.8%	19.4%	18.9%	18.6%	18.4%	18.2%	17.9%	18.0%	17.6%	17.6%	18.1%	18.4%	17.9%	18.3%	18.1%	18.2%	18.6%	37	-10.02	-35.0%
HAWAII	12.5%	11.6%	9.1%	8.4%	8.1%	7.6%	7.8%	7.5%	6.8%	7.6%	6.8%	7.7%	8.3%	7.7%	7.8%	8.6%	8.9%	8.8%	9.2%	9.4%	9.5%	9.4%	5	-3.02	-24.2%
IDAHO	25.3%	19.3%	18.9%	17.2%	16.8%	16.1%	16.4%	18.4%	16.5%	18.3%	16.4%	17.4%	16.7%	16.4%	17.6%	18.6%	17.5%	17.4%	18.8%	17.6%	17.6%	18.1%	35	-7.23	-28.5%
ILLINOIS	25.7%	24.0%	23.7%	23.1%	22.1%	20.0%	19.2%	19.2%	19.1%	19.3%	18.5%	18.6%	18.0%	18.0%	18.1%	18.3%	18.7%	18.1%	17.8%	18.3%	19.4%	19.8%	41	-5.92	-23.0%
INDIANA	24.0%	20.2%	19.2%	18.9%	17.1%	15.9%	15.8%	15.5%	15.2%	15.0%	14.6%	14.1%	13.9%	13.7%	13.3%	13.6%	13.4%	13.0%	12.9%	12.8%	12.6%	12.7%	13	-11.32	-47.1%
IOWA	22.3%	20.0%	19.3%	18.9%	17.6%	16.2%	15.3%	15.1%	14.9%	14.9%	14.4%	15.1%	14.9%	15.3%	15.6%	16.2%	16.9%	17.0%	16.7%	18.2%	18.5%	19.2%	39	-3.17	-14.2%
KANSAS	26.1%	23.0%	22.8%	22.3%	20.9%	20.1%	20.5%	19.9%	19.8%	18.4%	17.4%	17.0%	16.1%	16.2%	16.1%	16.9%	17.4%	17.7%	18.7%	18.9%	18.5%	18.5%	36	-7.58	-29.0%
KENTUCKY	26.0%	21.6%	20.9%	21.1%	20.1%	20.3%	19.9%	19.3%	19.0%	18.2%	17.0%	17.7%	17.1%	16.5%	16.2%	16.7%	16.0%	15.8%	16.4%	16.4%	16.5%	15.6%	25	-10.33	-39.8%
LOUISIANA	29.7%	26.5%	25.1%	25.0%	23.7%	20.0%	19.4%	18.2%	17.6%	17.0%	16.4%	16.1%	16.1%	14.9%	15.4%	15.7%	16.1%	16.9%	16.5%	16.7%	17.0%	18.1%	34	-11.64	-39.2%
MAINE	27.2%	20.1%	18.2%	19.3%	18.3%	17.4%	16.8%	17.3%	17.6%	17.8%	17.2%	17.6%	18.1%	18.8%	19.0%	20.7%	20.3%	21.4%	20.8%	20.6%	19.6%	20.4%	44	-6.86	-25.2%
MARYLAND	19.8%	15.9%	15.8%	14.8%	14.3%	13.9%	14.2%	13.3%	12.8%	12.4%	12.5%	12.0%	12.1%	12.8%	13.5%	13.1%	13.3%	13.0%	13.0%	13.9%	13.1%	12.8%	14	-7.02	-35.5%
MASSACHUSETTS	26.7%	21.2%	20.2%	19.9%	18.9%	19.0%	18.2%	17.7%	18.1%	18.2%	17.6%	17.7%	17.6%	18.2%	18.2%	18.7%	18.7%	19.2%	19.6%	19.9%	19.8%	20.5%	46	-6.23	-23.3%
MICHIGAN	16.4%	13.9%	13.4%	13.7%	13.4%	13.2%	12.6%	12.2%	13.0%	12.6%	13.0%	12.9%	12.4%	12.1%	12.2%	13.1%	12.9%	13.5%	13.6%	13.8%	14.4%	14.9%	20	-1.52	-9.3%
MINNESOTA	19.0%	16.6%	15.3%	14.6%	13.5%	13.7%	13.4%	14.1%	13.4%	14.1%	12.7%	13.3%	13.9%	13.8%	14.5%	15.7%	16.3%	16.8%	16.5%	16.8%	16.0%	16.7%	28	-2.29	-12.0%
MISSISSIPPI	26.6%	24.3%	23.0%	23.1%	21.9%	20.4%	20.6%	19.5%	18.3%	18.8%	18.3%	17.9%	17.8%	18.1%	18.9%	19.8%	19.7%	20.4%	21.1%	21.6%	20.5%	19.9%	43	-6.71	-25.3%
MISSOURI	26.1%	23.1%	21.6%	20.7%	20.1%	19.2%	18.5%	18.9%	19.0%	18.6%	18.6%	18.8%	18.5%	17.9%	18.4%	19.2%	20.0%	20.9%	21.0%	20.4%	21.2%	21.5%	48	-4.65	-17.8%
MONTANA	21.5%	17.2%	16.3%	16.9%	15.5%	14.9%	14.9%	14.2%	14.7%	16.0%	13.6%	12.6%	12.5%	13.4%	14.3%	15.5%	16.8%	18.4%	17.8%	18.5%	18.9%	38	-2.55	-11.9%	
NEBRASKA	22.3%	22.7%	21.4%	21.6%	20.4%	18.7%	18.3%	18.2%	18.3%	18.0%	17.5%	17.0%	17.0%	16.4%	16.7%	17.2%	17.7%	18.9%	19.0%	18.8%	19.4%	19.6%	40	-2.77	-12.4%
NEVADA	20.3%	19.7%	18.8%	18.4%	17.5%	15.3%	15.4%	15.2%	15.7%	16.0%	13.7%	15.2%	14.0%	13.0%	13.0%	13.1%	12.3%	12.7%	14.1%	13.7%	14.2%	12.0%	31	-8.25	-40.7%
NEW HAMPSHIRE	25.5%	20.1%	18.4%	18.8%	16.9%	17.6%	16.5%	16.1%	15.1%	14.2%	14.1%	13.7%	14.0%	14.6%	16.1%	16.3%	16.8%	16.4%	15.8%	16.5%	18.2%	17.6%	32	-7.98	-31.2%
NEW JERSEY	17.9%	15.1%	14.2%	14.1%	13.2%	12.8%	12.3%	11.5%	10.7%	10.2%	9.7%	9.3%	9.5%	9.6%	9.9%	10.7%	10.5%	10.7%	10.3%	10.6%	10.7%	10.9%	7	-6.96	-39.0%
NEW MEXICO	21.7%	18.1%	17.3%	16.1%	17.2%	17.0%	16.4%	18.0%	15.4%	15.9%	17.0%	17.1%	16.0%	15.6%	14.0%	14.8%	15.7%	16.8%	15.8%	16.6%	15.6%	14.1%	18	-7.60	-35.1%
NEW YORK	21.3%	18.2%	17.6%	17.3%	16.0%	15.5%	14.2%	13.6%	12.4%	11.7%	11.3%	11.3%	10.9%	11.2%	11.3%	11.7%	11.7%	11.6%	11.5%	11.8%	12.2%	12.3%	12	-9.02	-42.3%
NORTH CAROLINA	21.4%	15.6%	14.8%	15.3%	14.8%	14.4%	14.0%	13.7%	12.9%	12.5%	12.4%	12.1%	11.2%	11.2%	11.7%	12.2%	11.6%	11.7%	11.7%	12.7%	12.9%	13.2%	16	-8.25	-38.4%
NORTH DAKOTA	21.3%	18.7%	18.3%	19.3%	19.1%	18.2%	17.5%	17.1%	17.1%	18.0%	17.6%	18.1%	17.2%	16.8%	17.5%	19.0%	19.8%	20.1%	20.5%	21.6%	22.1%	22.1%	50	0.77	3.6%
OHIO	25.4%	22.0%	21.6%	22.0%	20.4%	19.3%	17.8%	17.1%	15.9%	15.2%	14.7%	14.5%	14.2%	13.5%	12.9%	13.4%	13.2%	13.3%	12.9%	13.0%	13.1%	11.7%	9	-13.76	-54.1%
OKLAHOMA	27.3%	21.7%	20.9%	21.0%	19.9%	19.4%	19.6%	19.8%	19.5%	19.5%	18.8%	19.1%	18.4%	16.7%	14.8%	14.5%	13.8%	14.2%	13.7%	14.2%	14.3%	15.2%	23	-12.15	-44.5%
OREGON	21.5%	18.3%	17.1%	18.5%	17.3%	16.9%	15.2%	14.3%	14.4%	14.2%	13.7%	14.5%	14.2%	14.7%	14.8%	15.5%	16.2%	16.0%	15.1%	15.3%	15.4%	15.0%	21	-6.49	-30.2%
PENNSYLVANIA	22.3%	18.8%	17.9%	17.6%	16.6%	16.0%	15.9%	15.7%	15.4%	15.5%	15.6%	15.6%	15.6%	15.1%	14.8%	15.5%	15.3%	15.6%	15.3%	15.8%	16.2%	16.6%	27	-5.70	-25.6%
RHODE ISLAND	24.0%	17.5%	16.5%	17.2%	17.0%	17.2%	17.5%	17.6%	16.0%	16.3%	15.8%	16.3%	15.9%	15.3%	16.2%	16.9%	17.1%	18.2%	17.7%	20.0%	19.7%	20.4%	45	-3.58	-14.9%
SOUTH CAROLINA	20.7%	15.5%	15.6%	15.5%	14.2%	13.9%	13.9%	14.9%	13.8%	12.9%	13.0%	13.8%	13.2%	13.0%	13.8%	14.3%	15.1%	14.7%	14.8%	14.5%	14.1%	15.1%	22	-5.57	-26.9%
SOUTH DAKOTA	21.5%	18.6%	18.1%	18.4%	17.7%	16.5%	16.2%	17.0%	16.8%	16.7%	15.9%	16.6%	16.9%	16.6%	17.1%	17.5%	18.8%	19.4%	20.7%	20.7%	21.3%	22.9%	51	1.36	6.3%
TENNESSEE	30.0%	23.4%	22.7%	22.8%	20.6%	19.3%	18.1%	17.2%	16.5%	15.7%	15.1%	15.0%	14.5%	14.3%	14.9%	15.3%	15.0%	15.7%	15.4%	15.9%	16.9%	16.9%	29	-13.08	-43.7%
TEXAS	28.8%	26.5%	25.3%	23.8%	22.5%	20.2%	18.5%	17.3%	16.7%	14.7%	12.9%	12.5%	12.4%	11.9%	11.9%	12.0%	11.6%	11.5%	10.2%	9.7%	8.9%	8.9%	2	-19.97	-69.2%
UTAH	27.1%	21.7%	23.1%	21.2%	16.6%	18.2%	16.4%	17.0%	16.5%	15.7%	15.2%	12.8%	12.3%	11.7%	12.4%	13.4%	13.5%	12.9%	12.1%	12.6%	14.2%	13.0%	15	-14.11	-52.0%
VERMONT	25.4%	18.8%	18.0%	18.9%	17.6%	16.5%	16.8%	16.4%	17.2%	18.2%	16.7%	15.2%	14.8%	13.8%	15.8%	14.9%	15.0%	15.1%	17.6%	18.6%	20.1%	19.9%	42	-5.55	-21.8%
VIRGINIA	23.0%	19.7%	18.2%	18.4%	17.2%	17.0%	15.7%	15.8%	15.5%	14.6%	14.0%	14.3%	14.1%	14.2%	13.8%	13.6%	13.6%	13.6%	13.8%	13.9%	13.3%	13.3%	17	-9.75	-42.3%
WASHINGTON	22.3%	18.6%	17.5%	17.6%	16.7%	15.8%	15.1%	15.1%	15.2%	15.1%	15.0%	15.0%	14.6%	14.7%	14.3%	14.1%	14.0%	13.6%	14.0%	13.6%	14.9%	14.7%	19	-7.66	-34.3%
WEST VIRGINIA	20.5%	16.5%	16.6%	16.4%	16.0%	15.7%	16.4%	15.5%	14.9%	14.6%	13.1%	14.5%	14.5%	14.6%	14.9%	16.1%	16.2%	16.7%	16.8%	16.9%	17.1%	16.2%	26	-4.27	-20.8%
WISCONSIN	19.0%	16.3%	14.6%	14.3%	13.6%	13.0%	12.7%	12.9%	12.7%	12.6%	12.3%	12.3%	12.1%	12.3%	13.0%	13.7%	13.8%	14.1%	13.6%	14.3%	14.1%	15.5%	24	-3.54	-18.6%
WYOMING	16.8%	17.9%	15.6%	14.6%	12.9%	12.5%	11.5%	12.8%	13.2%	13.0%	14.9%	14.0%	14.7%	15.5%	16.6%	20.0%	18.2%	19.6%	19.1%	20.8%</					